

Trail Description

The Town of Rindge donated the Converse Meadow conservation easement to the Monadnock Conservancy with the intention of keeping the land open to the public for hiking. The Town maintains a 1.5-mile loop trail on the property. The trail traverses the property's hemlock and hardwood groves and affords views of beautiful open wetlands. The trail is a relatively easy hike on an old, unmarked woods road.

Property History

This property is host to a historic mill site that predates revolutionary times. This mill was the first grist mill in town, and though the original build date is not known, early records date to 1762. The mill was sold in 1775, and it then became a sawmill. Over fifty years later, it burned, and was bought by the property's namesake, Joshua Converse, in 1845. The mill produced boxes until it was next sold in 1923, at which point it produced lumber, shingles, and cordwood. The mill burned again in the 1930s and was not replaced.

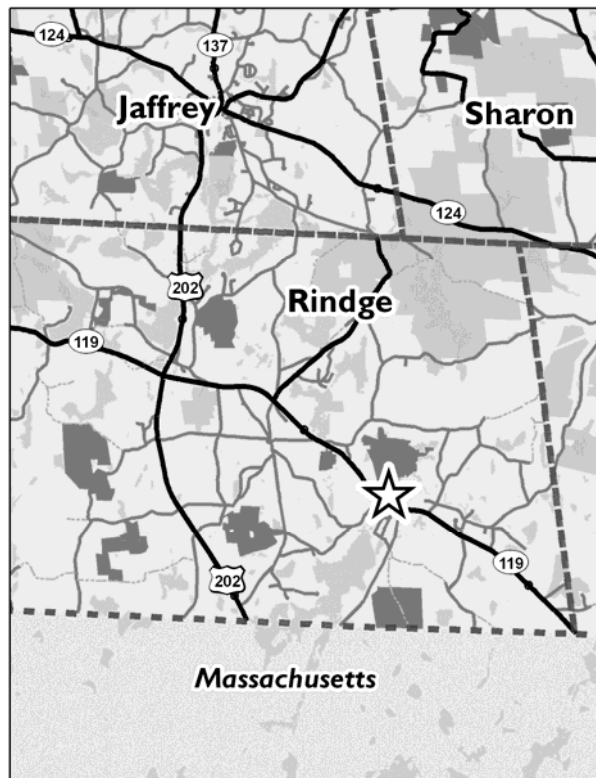
Uses

Hiking, snowshoeing, and cross-country skiing are welcome. Please leave only footprints.



Stone work along the dam at Converse Meadow, at the old mill site.

Locator Map



The Monadnock Conservancy is a regional land trust whose purposes are to identify, promote, and actively seek protection of lands with natural, aesthetic, and historic significance in the Monadnock Region; and to monitor and enforce the protection of lands in the trust.

Monadnock Conservancy

PO Box 337

Keene, NH 03431

Phone: (603) 357-0600

Info@MonadnockConservancy.org

www.MonadnockConservancy.org

© Monadnock Conservancy, 2011

A Guide to



Converse Meadow RINDGE



LOOP TRAIL

Rating: Easy

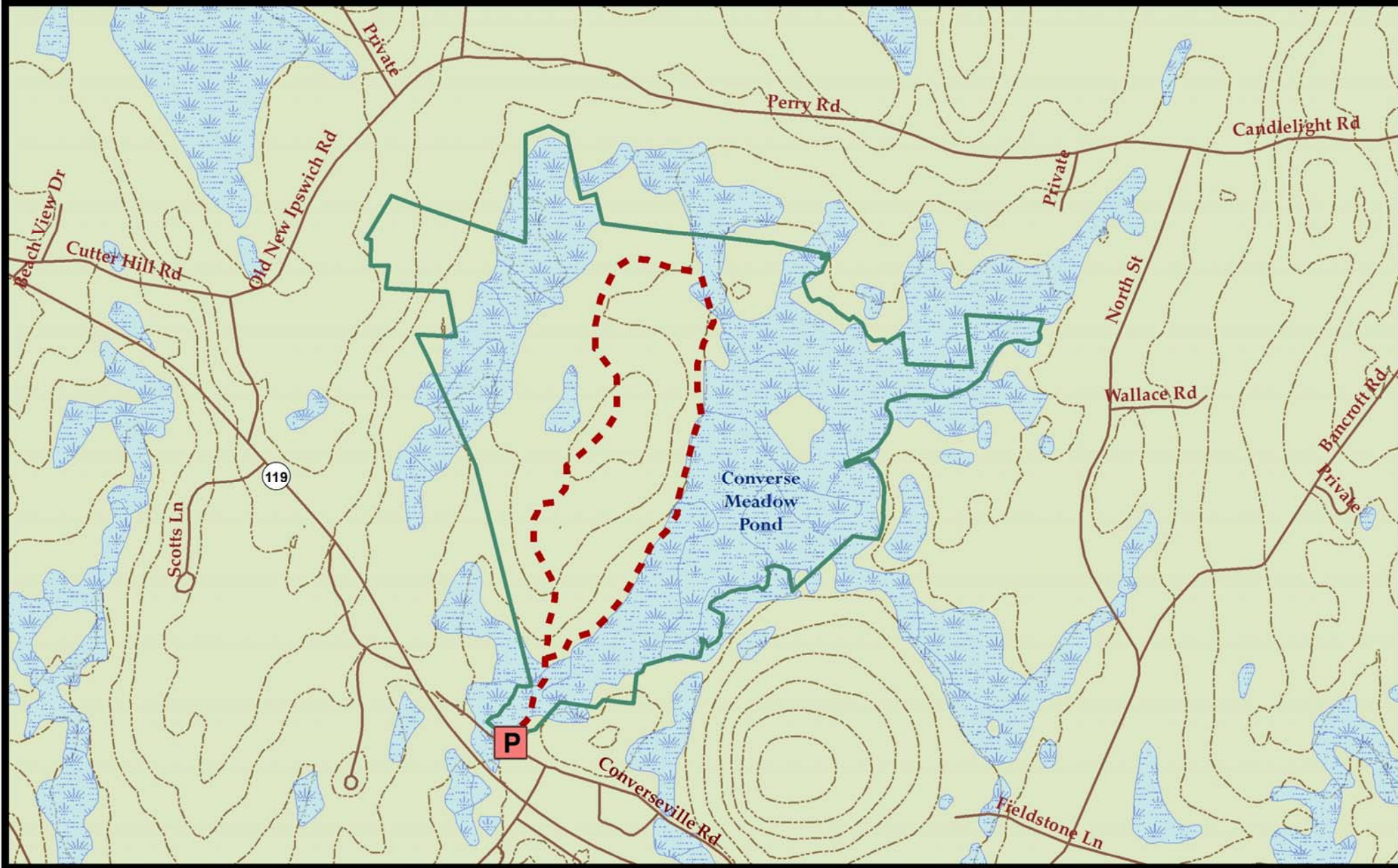
Distance: 1.5 miles

Parking: Limited, at trailhead




Access: via Converseville Road

Lat/Long: 71 58 53.64W/ 42 44 22.64N

This 240-acre easement is located in Rindge, New Hampshire, and provides wildlife habitat and recreational opportunities very close to routes 119 and 202. Converse Meadow is owned and maintained by the Town of Rindge, which purchased it in 2004 to prevent the land from being developed. The property is host to an old mill site, two beaver wetlands, and a diverse mix of forest communities.



Converse Meadow Conservation Easement Loop Trail- Rindge

-  Converse Meadow easement (240 acres)
-  Loop Trail
-  20' Contours

E.Hague, 6.21.11, Projection: NAD 83/NH State Plane,
Sources: GRANIT, SWRPC. 1:12,000 scale.

To Converse Meadow

From Keene, take Route 12 South to Fitzwilliam, and take Route 119 East to Rindge. Cross Route 202 and continue for roughly 3.3 miles. Take a slight left on Converseville Road. Go left at the stop sign and park on the right in front of the kiosk.

